



ISTRUZIONI D'USO TEMPLATE - BUSTINE MYLAR

ISTRUZIONI

QUANDO APRIRAI IL FILE DI TEMPLATE TROVERAI DUE LIVELLI DI LAVORO

1
LEVEL " TEMPLATE ":

Lasciare il livello bloccato.

A

CUT LINE:

Indica la linea di taglio del prodotto finito.

B

SAFE AREA:

Mantenere i testi e le parti importanti della grafica all'interno di questo margine.

C

ELETTROSALDATURA:

Indica la posizione del punto di elettrosaldatura.

D

BLEED:

Indica l'abbondanza per la grafica.

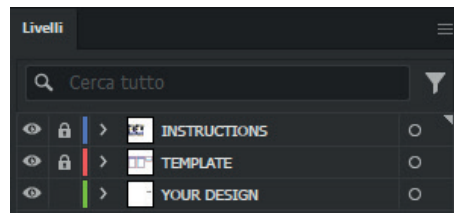
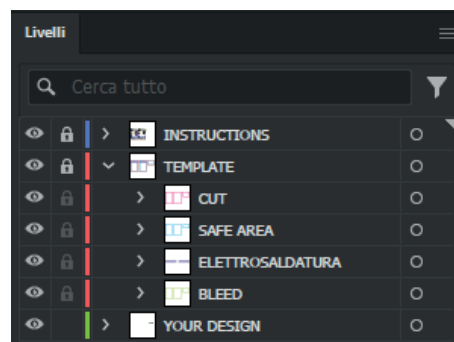
2
LIVELLO YOUR DESIGN:

Inserisci la tua grafica in questo livello, all'interno della linea di abbondanza, corrisponde all'area del lavoro finito.


DESIGN:

Il file deve essere un immagine vettoriale.

- Il file deve essere inserito all'interno dell'area di sicurezza. (esempio) **E**


1
2

A
B
C
D
E

DESIGN IMAGES:

 Nei file forniti dai clienti, le grafiche devono essere **vettoriali**, oppure, nel caso di **immagini raster**, devono essere incorporate all'interno del file.


Nel caso di immagini in formato PNG raccomandiamo una risoluzione di 300 DPI


IMPOSTAZIONI COLORE:

 È possibile stampare solo colori **CMYK**.

TESTI:

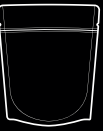
Nel caso siano presenti testi all'interno del file, è necessario convertirli in traccianti.


FORMATO FILE:

Salvare il file in formato PDF per stampa di alta qualità.

- È molto importante mantenere i livelli **TEMPLATE** e **YOUR DESIGN** divisi.

 Invia i tuoi file PDF, EPS, AI, PSD, JPG, PNG a: commerciale@ilmyo.it



TEMPLATE DESIGN INSTRUCTIONS - MYLAR BAG

INSTRUCTIONS

WHEN OPENING THE TEMPLATE FILE YOU WILL FIND TWO LEVELS OF WORK

1

LEVEL " TEMPLATE ":

Leave the level locked.

A



CUT LINE:

Indicates the cutting line of product.

B



SAFE AREA:

Keep text and important graphics within this margin.

C



ELETTROSALDATURA:

Indicates the position of the electrowelding point.

D



BLEED:

Indicates the bleed for the graphics.

2

LIVELLO YOUR DESIGN:

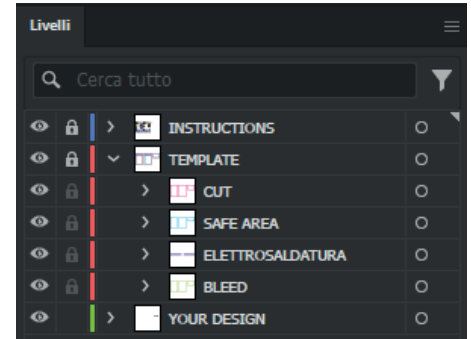
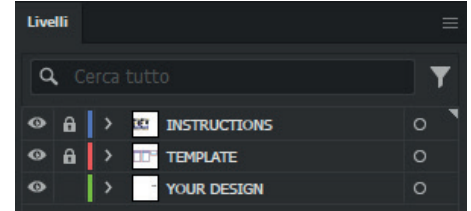
Insert your graphics into the level, inside the bleed line, it corresponds to the printable area.



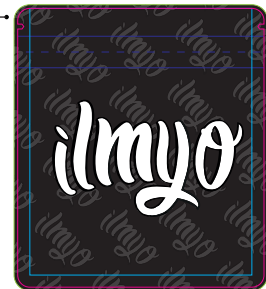
DESIGN:

The file must be a vector or image.

- The file must be placed inside the safe area. (example) **E**



E



DESIGN IMAGES:

In the basic file sent by the customer, the graphics must be a **vector** or in the case of **images**, they must be attached or incorporated into the final design.



In the case of PNG images we recommend a png format with 300 DPI



COLOR MODE:

Only **CMYK** colours are possible to print.



TEXT:

If there is text in your design, you need to convert into a text outline.



FILE FORMATS:

Save the file in pdf in high quality.

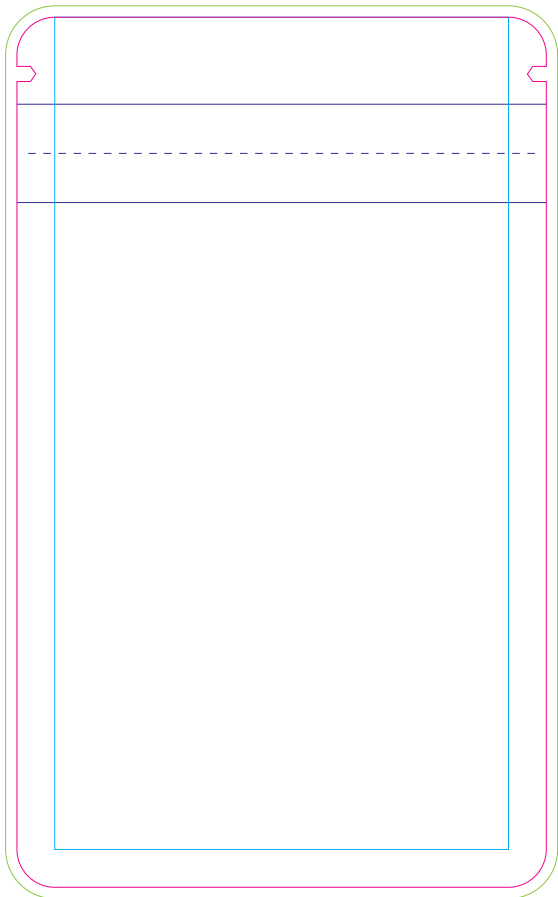
- It is important to keep the **template** and **graphics** layers divided

To submit PDF, EPS, AI, PSD, JPG, PNG files at commerciale@ilmyo.it

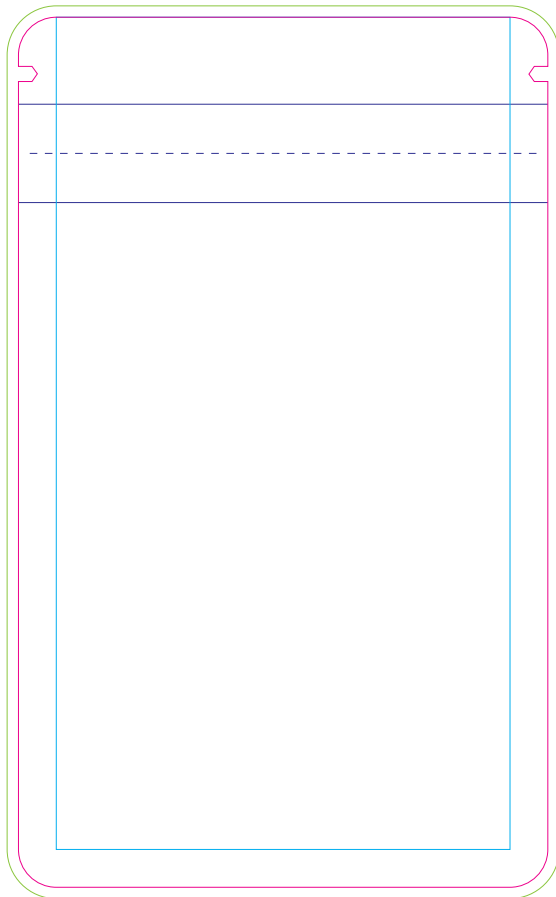
MYLAR BAG

70x115x44mm

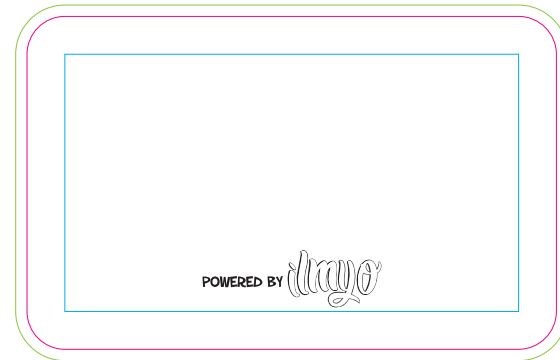
FRONT



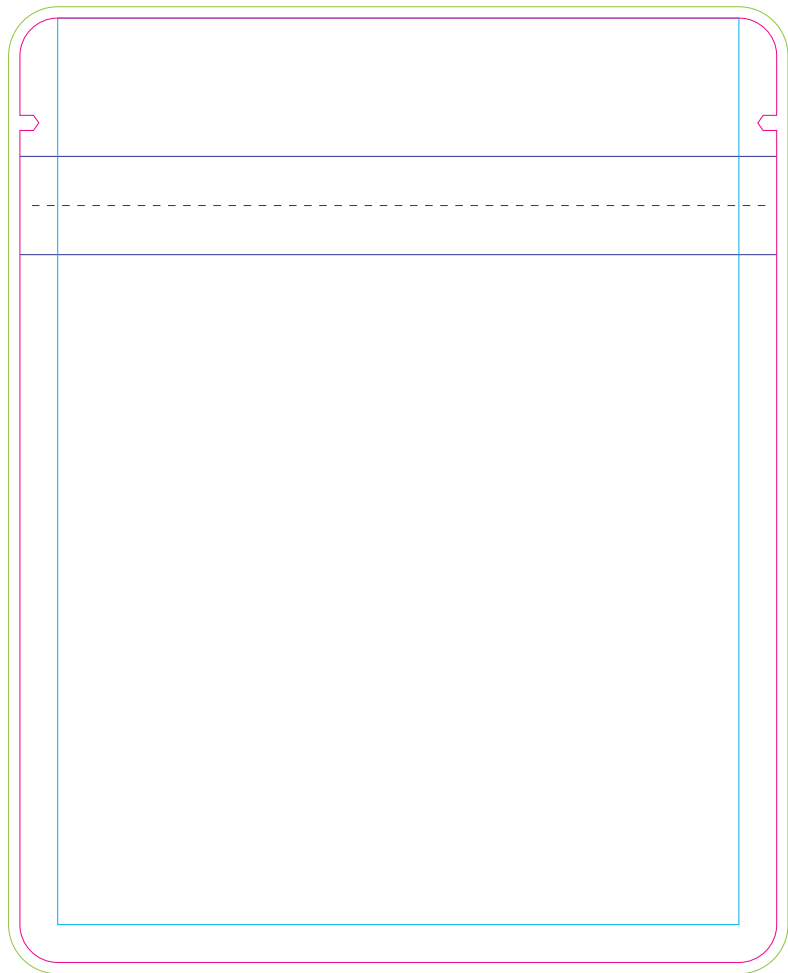
BACK



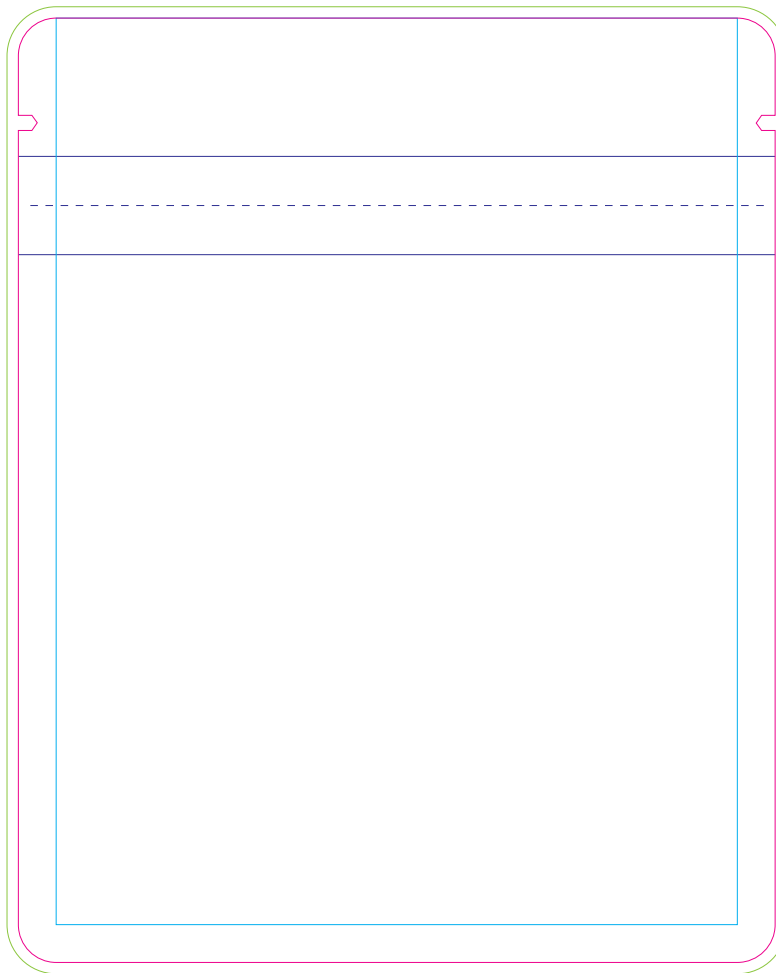
BOTTOM

**FILL IN YOUR CHOICES****QUANTITY:** 500pz 1000pz 2000pz 3000pz 4000pz 5000pz**FINISH:** GLOSSY MATTE**BASE MATERIAL:** WHITE HOLOGRAPHIC TRANSPARENT**EUROFORO:** YES NO

FRONT



BACK



BOTTOM



FILL IN YOUR CHOICES

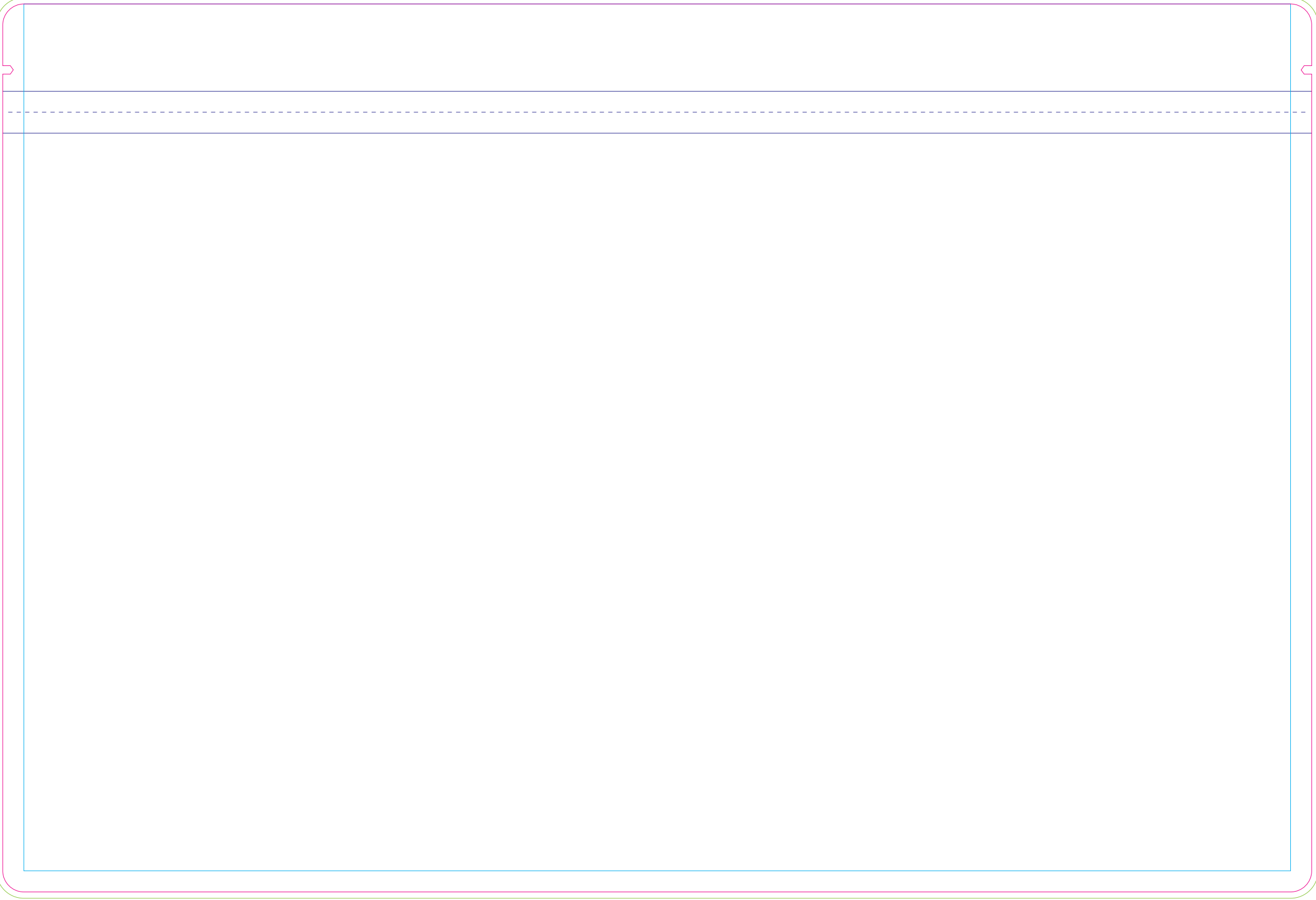
QUANTITY: 500pz 1000pz 2000pz 3000pz 4000pz 5000pz

FINISH: GLOSSY MATTE

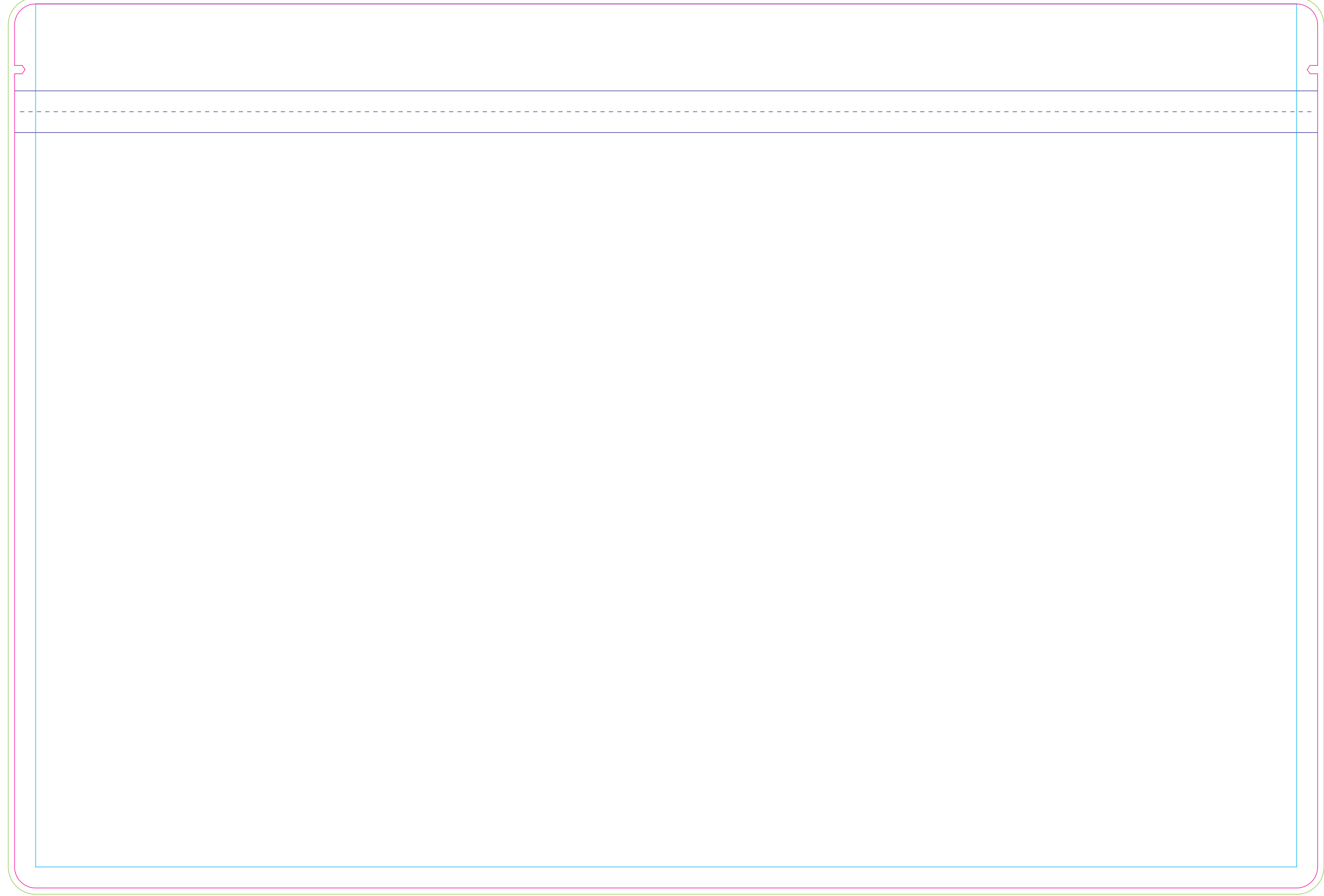
BASE MATERIAL: WHITE HOLOGRAPHIC TRANSPARENT

EUROFORO: YES NO

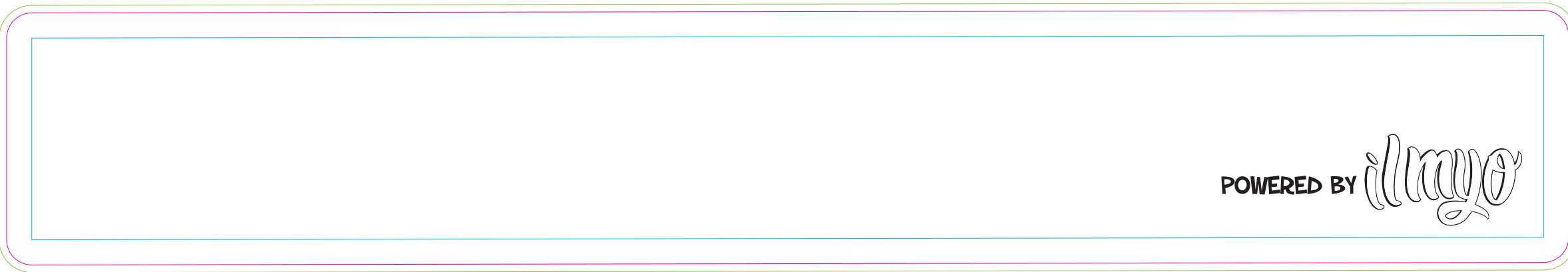
FRONT



BACK



BOTTOM



FILL IN YOUR CHOICES

QUANTITY: 500pz 1000pz 2000pz 3000pz 4000pz 5000pz

FINISH: GLOSSY MATTE

BASE MATERIAL: WHITE HOLOGRAPHIC TRANSPARENT

EUROFORO: YES NO